



Grower Joel Armistead

Farm Armistead Farms

Field River Bottom

Pivot VRI by Sector Report

Base Application Depth: 0.60 in

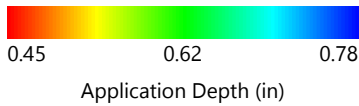
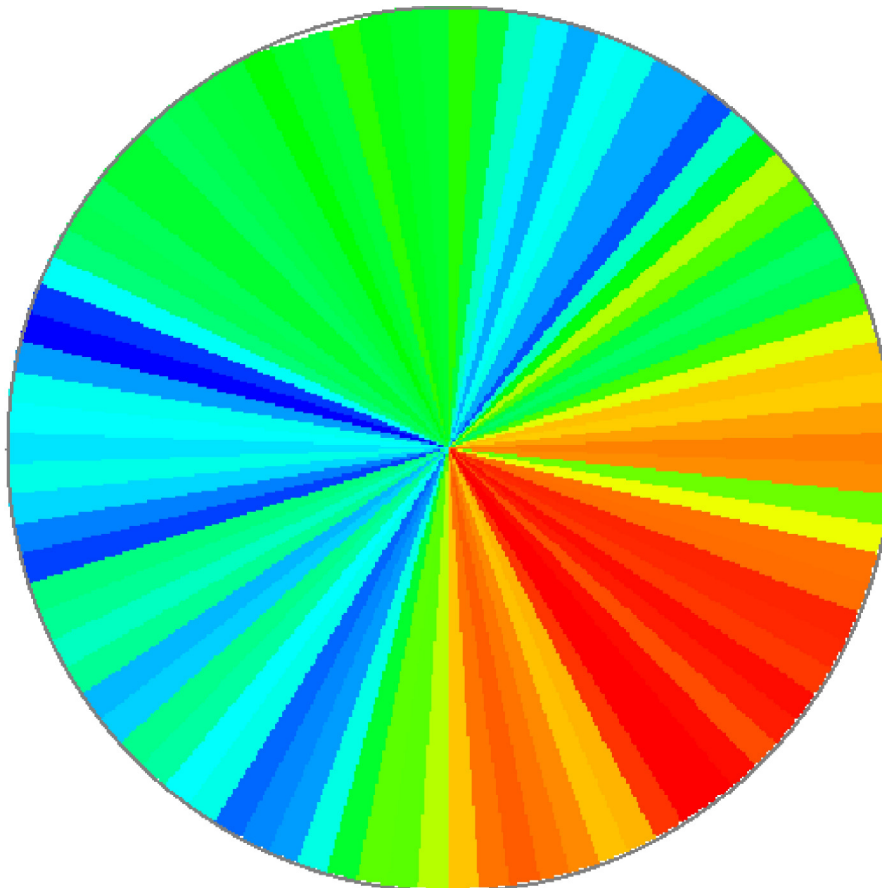
Base Walk Rate: 63.00 (%)

Total Area: 104.18 ac **Total Time:** 1d 10hr 34min

Total Flat Rate Water Amount: 1,697,321.8 gal

Total VRI Water Amount: 1,740,243.6gal (0.62in/ac)

Powered by pct-ag.com





Grower Joel Armistead

Farm Armistead Farms

Field River Bottom

Pivot VRI by Sector Report

Start Angle	Stop Angle	Area (ac)	Application (in)	Speed (%)
0	4	1.19	0.60	62.58
4	8	1.16	0.64	59.47
8	12	1.16	0.68	55.74
12	16	1.16	0.70	53.80
16	20	1.16	0.73	52.11
20	24	1.15	0.70	54.26
24	28	1.16	0.69	54.67
28	32	1.15	0.73	52.14
32	36	1.16	0.72	52.14
36	40	1.16	0.75	50.12
40	44	1.16	0.68	55.63
44	48	1.16	0.62	60.97
48	52	1.16	0.56	67.66
52	56	1.16	0.59	63.92
56	60	1.16	0.64	59.48
60	64	1.16	0.65	58.29
64	68	1.16	0.64	58.93
68	72	1.16	0.60	63.43
72	76	1.15	0.54	69.52
76	80	1.17	0.51	73.58
80	84	1.16	0.52	73.11
84	88	1.16	0.50	75.08
88	92	1.16	0.49	76.59
92	96	1.16	0.50	76.15
96	100	1.16	0.58	65.05
100	104	1.16	0.54	70.04
104	108	1.16	0.49	77.48
108	112	1.16	0.49	77.71
112	116	1.16	0.46	81.73
116	120	1.16	0.46	81.45
120	124	1.16	0.47	80.57
124	128	1.16	0.46	83.02
128	132	1.16	0.46	81.97
132	136	1.15	0.48	79.30
136	140	1.16	0.46	82.92
140	144	1.16	0.45	83.86
144	148	1.15	0.45	83.75
148	152	1.16	0.47	80.79
152	156	1.16	0.51	74.15
156	160	1.16	0.51	73.52
160	164	1.16	0.50	76.24
164	168	1.16	0.49	77.20
168	172	1.16	0.48	78.46
172	176	1.16	0.49	77.29
176	180	1.19	0.51	73.43
180	184	1.13	0.56	67.82
184	188	1.16	0.59	64.38
188	192	1.16	0.59	64.40
192	196	1.16	0.63	59.92
196	200	1.16	0.69	54.77
200	204	1.16	0.73	51.76
204	208	1.16	0.74	51.24
208	212	1.15	0.75	50.55
212	216	1.17	0.69	54.70
216	220	1.16	0.70	54.15
220	224	1.16	0.67	56.54
224	228	1.16	0.66	57.18
228	232	1.16	0.71	52.92
232	236	1.16	0.72	52.38
236	240	1.16	0.66	56.93

Grower Joel Armistead

Farm Armistead Farms

Field River Bottom

Pivot VRI by Sector Report

Start Angle	Stop Angle	Area (ac)	Application (in)	Speed (%)
240	244	1.16	0.68	55.67
244	248	1.16	0.66	56.95
248	252	1.16	0.66	57.42
252	256	1.15	0.76	49.74
256	260	1.17	0.74	51.14
260	264	1.16	0.71	53.19
264	268	1.16	0.69	54.68
268	272	1.16	0.71	53.43
272	276	1.16	0.70	54.11
276	280	1.16	0.69	54.46
280	284	1.16	0.73	51.72
284	288	1.16	0.78	48.43
288	292	1.16	0.76	49.58
292	296	1.16	0.70	54.21
296	300	1.16	0.66	57.69
300	304	1.16	0.64	58.82
304	308	1.16	0.65	58.58
308	312	1.16	0.63	59.86
312	316	1.16	0.63	59.82
316	320	1.16	0.64	58.64
320	324	1.16	0.64	59.01
324	328	1.16	0.63	59.57
328	332	1.16	0.63	59.73
332	336	1.15	0.62	61.18
336	340	1.13	0.63	60.11
340	344	1.13	0.63	59.58
344	348	1.13	0.60	62.61
348	352	1.15	0.62	60.73
352	356	1.16	0.63	60.16
356	360	1.13	0.63	59.94